

Murrumbidgee Local Health District

About Us

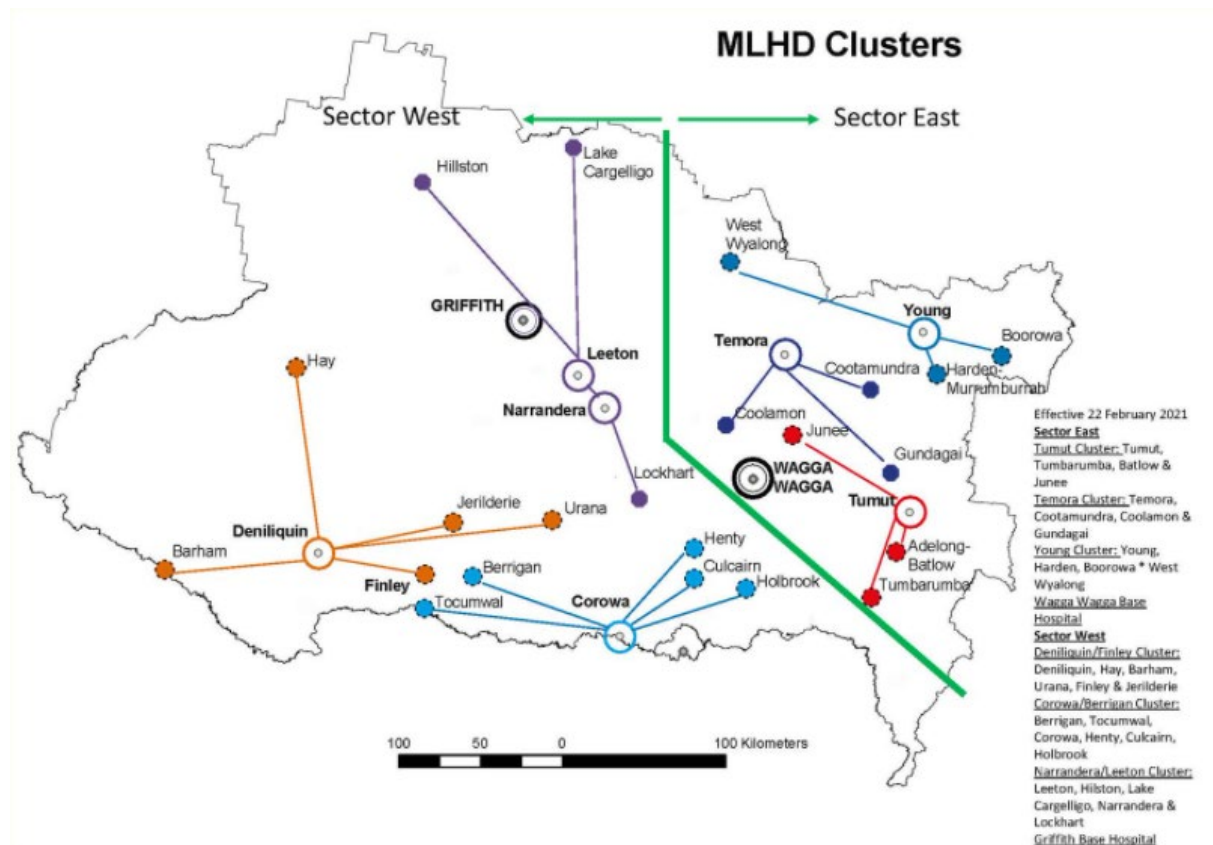
Murrumbidgee Local Health District (MLHD) spans 125,243 square kilometres across southern New South Wales, stretching from the Snowy Mountains in the east to the plains of Hillston in the northwest and all the way along the Victorian border.

As the largest employer in the region, with over 5,000 healthcare staff working across 33 hospitals and 12 primary health care centres, we are supported by hundreds of volunteers who make an invaluable contribution to enriching the lives of people in our care.

Our services are provided through:

- 1 Rural Referral Hospital
- 1 Base Hospital
- 8 District Hospitals
- 5 Community Hospitals
- 16 Multipurpose Services
- 2 Mercy Care Public Hospitals
- 12 Community Health posts
- 1 Brain Injury Rehabilitation Service
- Mental Health Services, including an Inpatient Unit and Mental Health Recovery Services.

[Click here to view Strategic Plan 2021 – 2026](#)



MLHD Role

The communities we support are diverse, with approximately 243,228 people in communities large and small across the region. We strive to support people to live the healthiest lives possible and to provide services as close to home as possible. Our aim is to provide excellence in all elements of health care and superior service to all of those we serve. Our values of collaboration, openness and respect, empowers us to embrace cultural diversity and to treat all people with dignity and compassion.

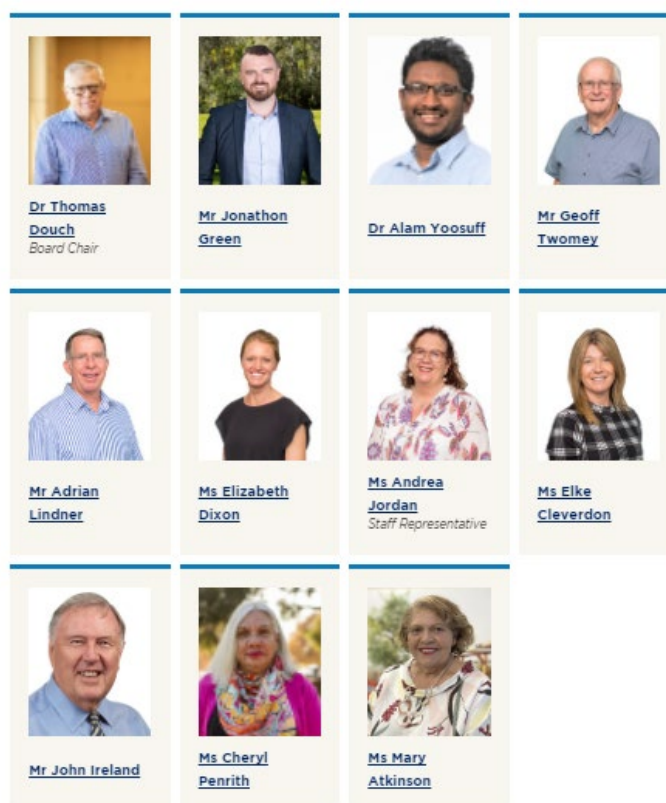
MLHD Board

The District Board works to ensure effective clinical and corporate governance frameworks are established to support standards of patient care and services. They set and ensure implementation of the Strategic Plan for the District.

Our Board is made up of local people who are committed the region. Directors bring a wealth of skills, experience and local knowledge to the management of our District.

Our Board is dedicated to providing safe quality care and strives for service improvement through innovation and research.

[Click here to find out more about our Board Directors](#)



Chief Executive

Jill Ludford started her career as a midwife and registered nurse, and leads our team of more than 3,500 staff to deliver healthcare across our District.

Appointed as Chief Executive in August 2014, Jill has developed strong links within the regional community and has fostered partnerships with a wide range of stakeholders to enhance the care for people in rural and remote communities and recognising the potential of information and communication technology, leading to improved health outcomes for our communities.

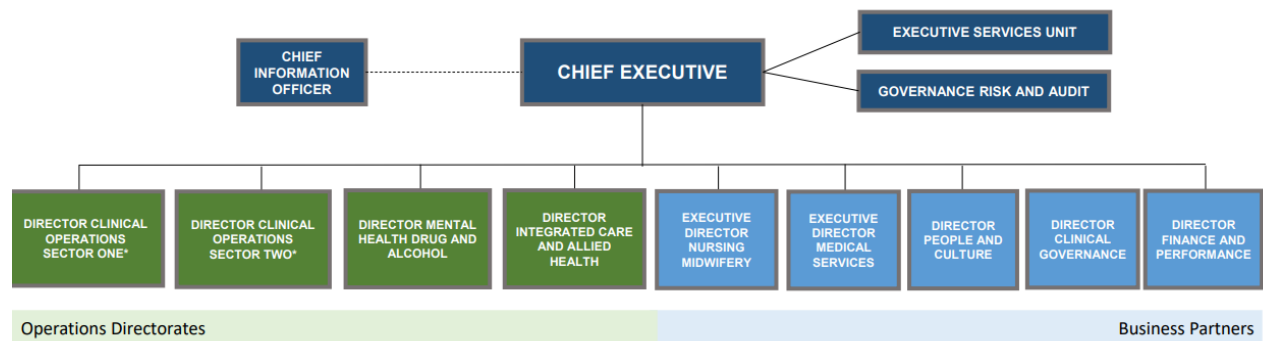
Jill has been a strong advocate for working to create a flexible and dynamic working environment, so MLHD is known as an employer of choice. Under her leadership, MLHD has introduced staff wellbeing programs and recognition awards, and fostered a culture of excellence.

On the weekends, Jill loves to spend her downtime in garden, on the family farm in Tumut and spending quality time with her grandchildren.



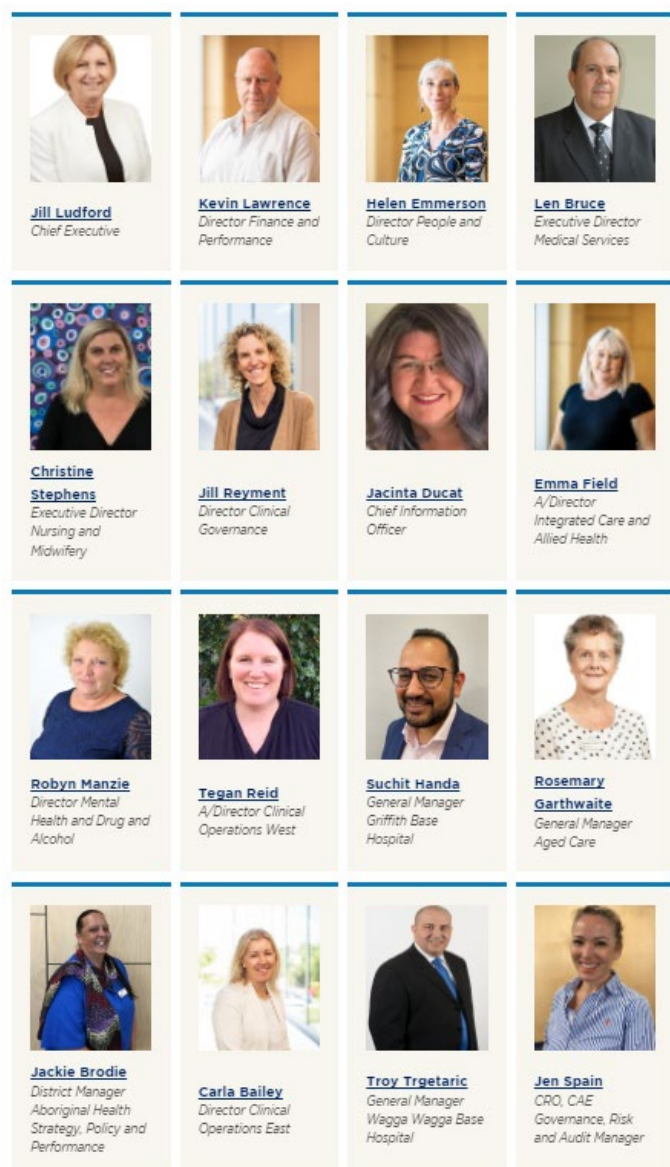
The Senior Executive Team

The organisational structure:



The Senior Executive team provides advice to the Chief Executive on major strategic, quality and safety, corporate and operational matters. They are driven by the following nine principles:

1. Commit to excellence
2. Measure the important things
3. Build a culture around service
4. Create and develop leaders
5. Focus on employee satisfaction
6. Building individual accountability
7. Align behaviours with goals and values
8. Communicate at all levels
9. Reward and recognise success



Our Facilities



Barham Multi Purpose Service



Batlow Adelong Multi Purpose Service



Berrigan Multi Purpose Service



Boorowa Multi Purpose Service



Coolamon Multi Purpose Service



Cootamundra Health Service



Corowa Health Service



Culcairn Multi Purpose Service



Deniliquin Health Service



District Office (Albury)



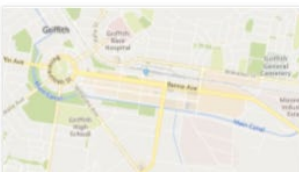
District Office (Wagga)



Finley Health Service



Griffith Base Hospital



Griffith Community Health



Gundagai Multi Purpose Service



Hay Health Service



Henty Multi Purpose Service



Hillston Multi Purpose Service



Holbrook Health Service



Jerilderie Multi Purpose Service



Junee Multi Purpose Service



Lake Cargelligo Multi Purpose Service



Leeton Health Service



Lockhart Multi Purpose Service



Mathoura Community Health



Moulamein Community Health



Murrumburrah Harden Health Service



Narrandera Health Service



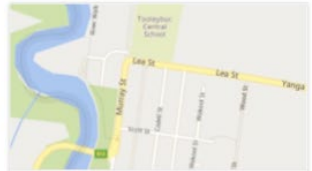
South West Brain Injury Rehabilitation Service (SWBIRS)



Temora Health Service



Tocumwal Health Service



Tooleybuc Community Health



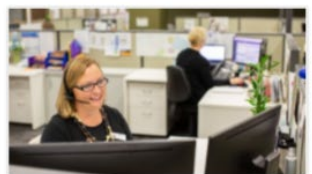
Tumbarumba Multi Purpose Service



Tumut Health Service



Urana Multi Purpose Service



Virtual Care Hub



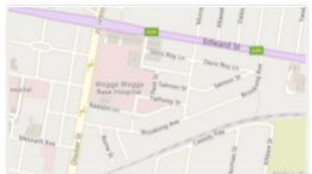
Wagga Wagga Aged Care



Wagga Wagga Base Hospital



Wagga Wagga Breast Screen



Wagga Wagga Sexual Health Clinic Brookong Centre



West Wyalong Health Service



Young Health Service